



Whether you're managing properties, assigning job locations, or navigating between sites, QB Maps enables you to display all your locations with customizable push pins. You can easily view and filter locations by proximity, assign job sites to employees based on nearby sites, and open directions directly in Google Maps.

Key Benefits:



Easily Map locations from Multiple Sources

View and manage multiple locations from various Quickbase tables, all on one single map.



Customizable Push Pins

Categorize your push pins by letters, numbers and colors. For example, use red "V" for vacant and orange "O" or a number "2" to represent the number of occupants.



Select locations by radius or shape

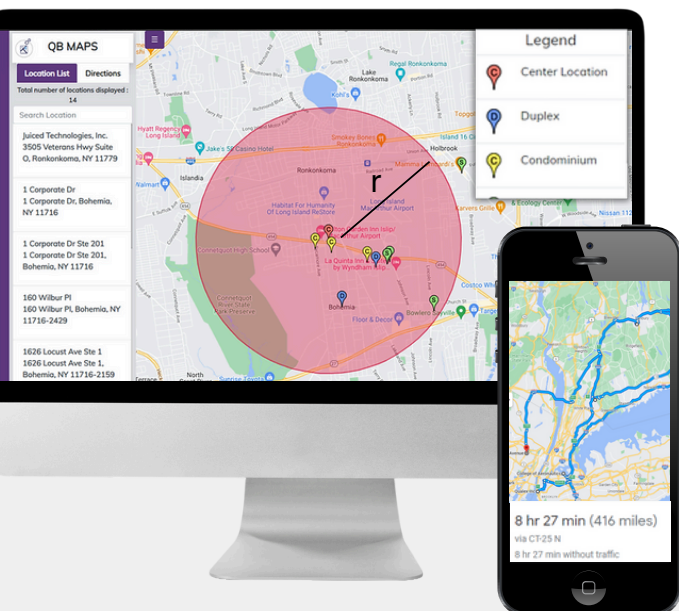
Find nearby locations by specifying a radius or draw a rectangle or shape to select all the location pins present in that area.

Product Features:

- Use customized legends for clear reference.
- Get distance and step-by-step drive directions between two location records.
- Open in Google maps for seamless navigation.
- See your current location among the locations from Quickbase.
- View fields of your choice from each location's record in your Quickbase application.

Commonly Paired Add-Ons:

- **Text My QB:** Text shipment updates to customers.
- **Courier:** Email clients or employees when a job is completed.



Scan to schedule a free consultation with our Customer Success Team and see how QB Maps fits your needs.

Common Use Cases:

- ✓ Job Site Assignment
- ✓ Live Directions for Drivers
- ✓ Sales Territory Management
- ✓ Property Status Management
- ✓ Shipment Progress Visualization
- ✓ Electric Pole Status Management

